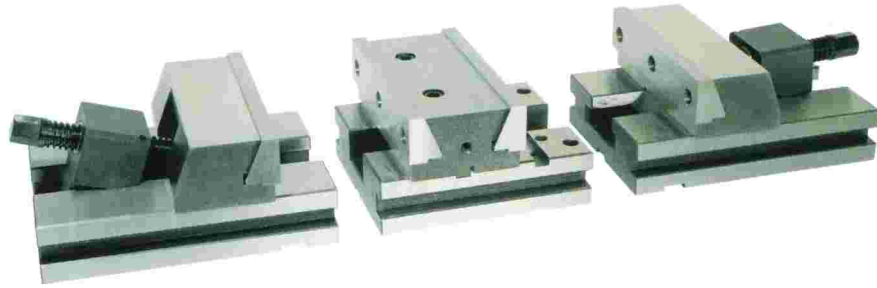
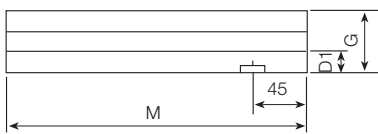


ELEMENTI COMPONENTI

MODULAR COMPONENTS

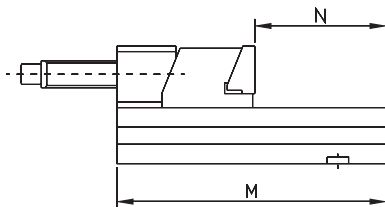


art. 202 SLITTA DI PROLUNGA EXTENSION SLIDE



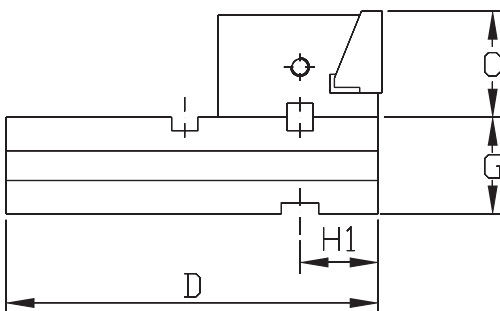
		100	125	150	200	300
Lunghezza - Length	M	140	170	250	250	300

art. 204 SLITTA E GANASCIA SCORREVOLE SLIDE AND SLIDING JAW



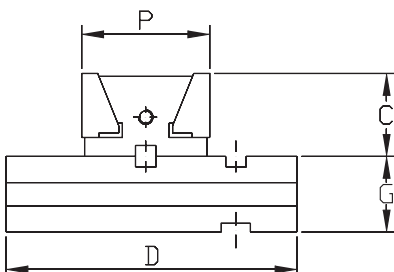
		100	125	150	200	300
Apertura - Opening	N	53	74	125	125	160
Peso - Weight	Kg.	6	11	16	28	50

art. 206 SLITTA CENTRALE CON GANASCIA FISSA CENTRE SLIDE WITH FIXED JAW



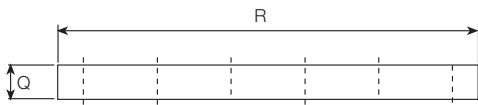
		100	125	150	200	300
Lunghezza - Length	0	120	170	200	200	200
Distanza - Distance	H1	29	32	42	45	50
Peso - Weight	Kg.	8	10	13	24	38

art. 208 SLITTA CENTRALE CON DOPPIA GANASCIA FISSA CENTRE SLIDE WITH DOUBLE FIXED JAW



		100	125	150	200	300
Larghezza - Width	P	63	70	102	102	114
Peso - Weight	Kg.	9	10	14	25	40

art. 210
ASTA DI COLLEGAMENTO
 CONNECTION'S ROD



		100	125	150	200	300
Sezione - Section	Q	12x12	12x12	16x16	16x16	16x16
Lunghezza - Length	R	200	250	300	350	350

POSSIBILITA' DI IMPIEGO E COMBINAZIONI VARIE TRA GLI ELEMENTI COMPONENTI

