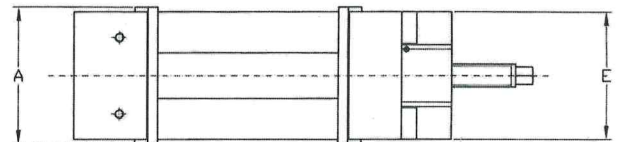
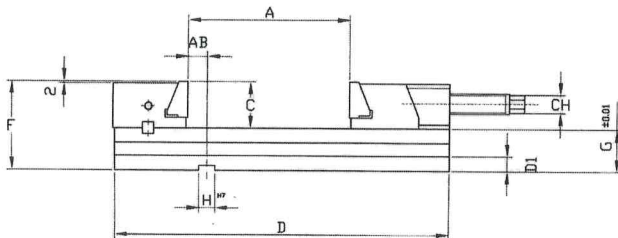
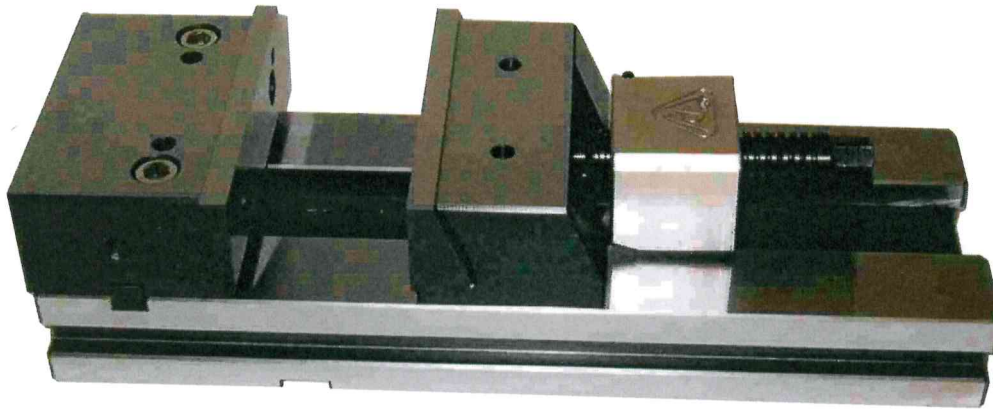


MORSA COMPONENTE DI PRECISIONE

MODULAR PRECISION CLAMPS - FIXED BASE

MODELLO MCP



Di serie morsa flottante
A richiesta morsa guidata
Floating vice mass-produced
Guided vice upon request

Morse di serie $\pm 0,1$
Morse accoppiate su richiesta $\pm 0,1$
Standard clamps $\pm 0,1$
Coupled clamps available to order $\pm 0,1$

		1015	1215	1520	1525	1530	2025	2030	2035	3040	3050	3060
Larghezza ganascia - <i>Jaw width</i>	A	100	125	150			200			300		
Apertura - <i>Opening</i>	B	150	150	200	250	300	250	300	350	400	500	600
Altezza ganascia - <i>Jaw height</i>	C	34	43	57			64			80		
Lunghezza - <i>Length</i>	D	303	319	415	465	515	479	529	579	666	766	866
Ingombro massimo - <i>Overall dimension</i>	D	362	376	506	556	606	566	616	666	772	872	972
	D2			584	634	684	649	699	749			
Larghezza - <i>Width</i>	E	85	105	140			165			210		
Altezza - <i>Height</i>	F	69	85	109			125			157		
Altezza base - <i>Base height</i>	G	35	42	52			61			77		
Cave - <i>Silots</i>	H	12	12	20			20			20		
Distanza - <i>Distance</i>	AB	20	12	24			34			27		
Peso - <i>Weight</i>	Kg.	9	13	28	30	32	48	50	52	97	112	127